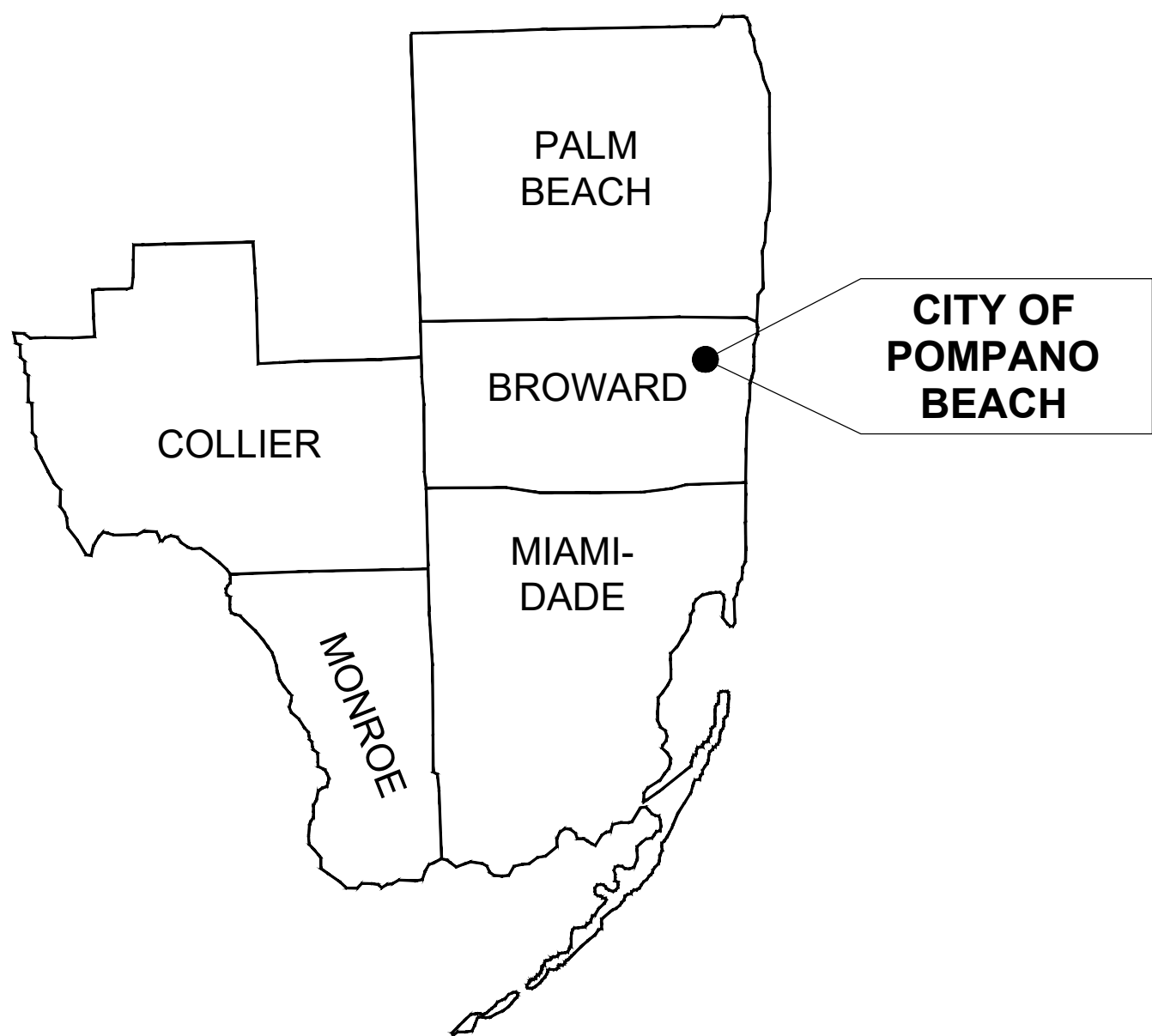


324 HAUS MIXED USE / NEW BUILDING - CIVIL PLANS REDESIGN

324 NW 6TH STREET, POMPANO BEACH, FL 33060



VICINITY MAP
SCALE: N.T.S



AERIAL VIEW
SCALE: N.T.S

DRAWINGS LIST

CS-100	COVER SHEET
C-100	GENERAL NOTES, PAVEMENT MARKING & SIGN AND WATER NOTES
C-101	SEWER AND PAVING & GRADING NOTES
C-102	SWPPP NOTES
C-200	PAVING & GRADING PLAN
C-201	DRAINAGE PLAN
C-202	PAVEMENT MARKING & SIGNS PLAN
C-203	SWPPP PLAN
C-204	WATER MAIN AND SEWER PLAN
C-500	DRAINAGE AND PAVEMENT DETAILS
C-501	DRAINAGE AND SIDEWALK DETAILS
C-502	SWPPP DETAILS
C-503	SECTIONS
C-504	GENERAL WATER AND SEWER DETAILS
C-505	GENERAL WATER AND SEWER DETAILS
C-506	SANITARY SEWER DETAILS
C-507	WATER SYSTEM DETAILS
C-508	MISCELLANEOUS DETAILS

SCOPE OF WORK

SET OF CIVIL DRAWINGS INCLUDING PAVING & GRADING, DRAINAGE, PAVEMENT MARKING & SIGNS, SWPPP AND WATER FOR PROPERTY LOCATED AT 324 NW 6TH ST. POMPANO BEACH, FL 33060

LEGEND AND ABBREVIATIONS:

ASPH	ASPHALT
BM	BENCH MARK
BRK	BRICK
C&G	CURB & GUTTER
CBS	CONCRETE BLOCK STRUCTURE
CBSW	CONCRETE BLOCK STRUCTURE WALL
CLF	CHAIN LINK FENCE
CONC	CONCRETE
EOP	EDGE OF PAVEMENT
EOW	EDGE OF WATER
FDOT	FLORIDA DEPARTMENT OF TRANSPORTATION
FND	FOUND
GRD	GROUND
IF	IRON FENCE
INV	INVERT
IP	IRON PIPE
MF	METAL FENCE
N	NAIL
ND	NAIL & DISC
NAVD	NATIONAL AMERICAN VERTICAL DATUM
NTS	NOT TO SCALE
O.R.B.	OFFICIAL RECORD BOOK
OH	OVERHEAD
PB	PLAT BOOK
PG	PAGE
PKND	PK NAIL & DISC
PRB	POLLUTION RETARDANT BAFFLE
R/W	RIGHT OF WAY
SEC	SECTION
STA	STATION
SWK	SIDEWALK
TBM	TEMPORARY BENCH MARK
TOB	TOP OF BANK
TWN	TOWNSHIP
UE	UTILITY EASEMENT
WF	WOOD FENCE
UE	UTILITY EASEMENT

COM	COMMUNICATION UTILITY BOX
EL	ELECTRIC UTILITY BOX
FO	FIBER OPTIC UTILITY BOX
TB	TRAFFIC SIGNAL BOX
TC	TRAFFIC SIGNAL CONTROL BOX
WM	WATER METER

BS	BELLSOUTH MANHOLE
CB	CATCH BASIN
SS	SANITARY SEWER MANHOLE
ST	STORM MANHOLE

-VALVES:	
GV	GAS VALVE
WV	WATER VALVE
-POLES:	
MTSP	METAL TRAFFIC SIGNAL POLE
WLP	WOOD LIGHT POLE
WPP	WOOD POWER POLE
PS	PEDESTRIAN SIGNAL POLE
-OTHER UTILITIES:	
ANCH	ANCHOR
DSW	DETECTABLE SIDEWALK WARNING
FH	FIRE HYDRANT
PE	POINT ELEVATION
TBM	TEMPORARY BENCH MARK (TBM)
TS	TRAFFIC SIGN
T	TREE
TP	TREE PALM
CL	CENTER LINE - BASE LINE
CLF	CHAIN LINK FENCE
C	CURB
EOP	EOP (EDGE OF PAVEMENT LINE)
LL	L/L (LOT LINE)
OEL	OVERHEAD ELECTRIC LINE
EUL	ELECTRIC UTILITY LINE
SUL	SANITARY SEWER LINE
SDL	STORM DRAINAGE LINE
FOL	FIBER OPTIC LINE
WML	WATER MAIN LINE
CL	COMMUNICATION LINE
R/W	R/W (RIGHT OF WAY LINE)
UE	UE (UTILITY EASEMENT LINE)

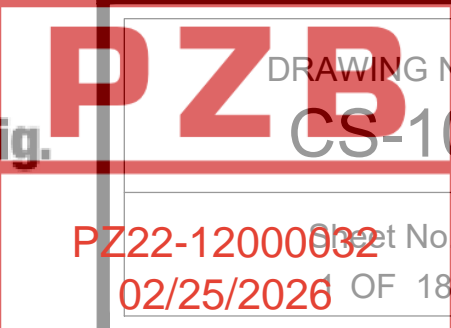
NOTE:
SYMBOLS SHOWN IN SURVEY DRAWINGS ARE NOT TO SCALE AND SHALL NOT BE USED TO SIZE SUCH ELEMENTS

LEGAL DESCRIPTION

THE EAST 50 FEET OF THE WEST 500 FEET OF THE NORTH HALF (N 1/2) OF THE NORTH HALF (N 1/2) OF THE SOUTHEAST QUARTER. (SE 1/4) OF THE NORTHEAST QUARTER (NE 1/4) OF THE SOUTHWEST QUARTER (SW 1/4) OF SECTION 35, TOWNSHIP 48 SOUTH, RANGE 42 EAST, PUBLIC RECORDS OF BROWARD COUNTY, FLORIDA.



Know what's below.
Call before you dig.



PZ22-12000092
02/25/2026

DRAWING NO.
CS-100

Sheet No.
OF 18

SHEET NAME:

COVER SHEET

REVISIONS	DATE
CITY COMM.	01-24-2025

DATE:	9/12/2025
SCALE:	AS SHOWN
DRAWN:	FP
CHECKED:	PS
APPVD:	JC
PROJECT ID:	FPV-C251004
CONTRACT NO:	-

PROJECT NAME / ADDRESS:
324 HAUS MIXED USE / NEW BUILDING - CIVIL PLANS
REDESIGN
324 NW 6TH STREET, POMPANO BEACH, FL 33060
CLIENT/OWNER:
AUSTIN FOX ARCHITECTURE
1754 E COMMERCIAL BLVD, FORT LAUDERDALE, FL 33334

JOSE A. COMPRES, P.E.
FLORIDA P.E. LIC. # 65557

CONEMCO ENGINEERING, INC.

THIS ITEM HAS BEEN DIGITALLY SIGNED AND SEALED BY JOSE A. COMPRES ON THE DATE INDICATED IN THE SIGNATURE. PRINTED COPIES OF THIS DOCUMENT ARE NOT CONSIDERED SIGNED AND SEALED AND THE SIGNATURE MUST BE VERIFIED ON ANY ELECTRONIC COPIES.

CONEMCO ENGINEERING, INC.
DEBRA CONEMCO Consultants
SBA 8(a) - Civil - Structural - MEP - CEI - Program Management - Land Surveyors

782 NW 42ND AVENUE UNIT 635
MIAMI, FL 33126
MAIN NUMBER 888-536-1536
CA # 2947